



POWER2PEER - DRIVING EFFICIENCY WITH THE CLEAN ENERGY MARKETPLACE

MAMTA SONWALKAR CEO/COFOUNDER



PV Systems on the rise 30% annually

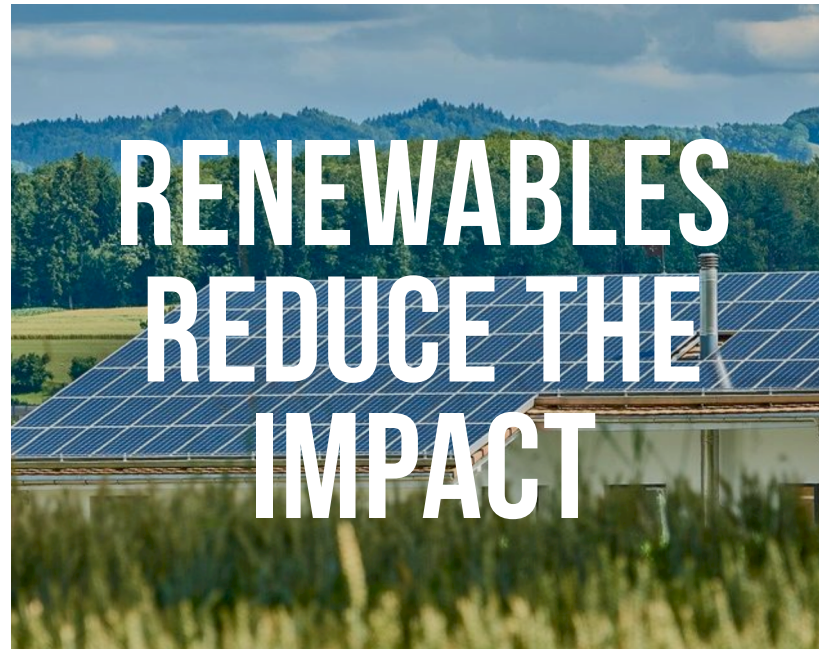
2.5 Million households with solar power in the USA

5 Giga Units/year in excess energy in the USA is **not monetized** for the generation side

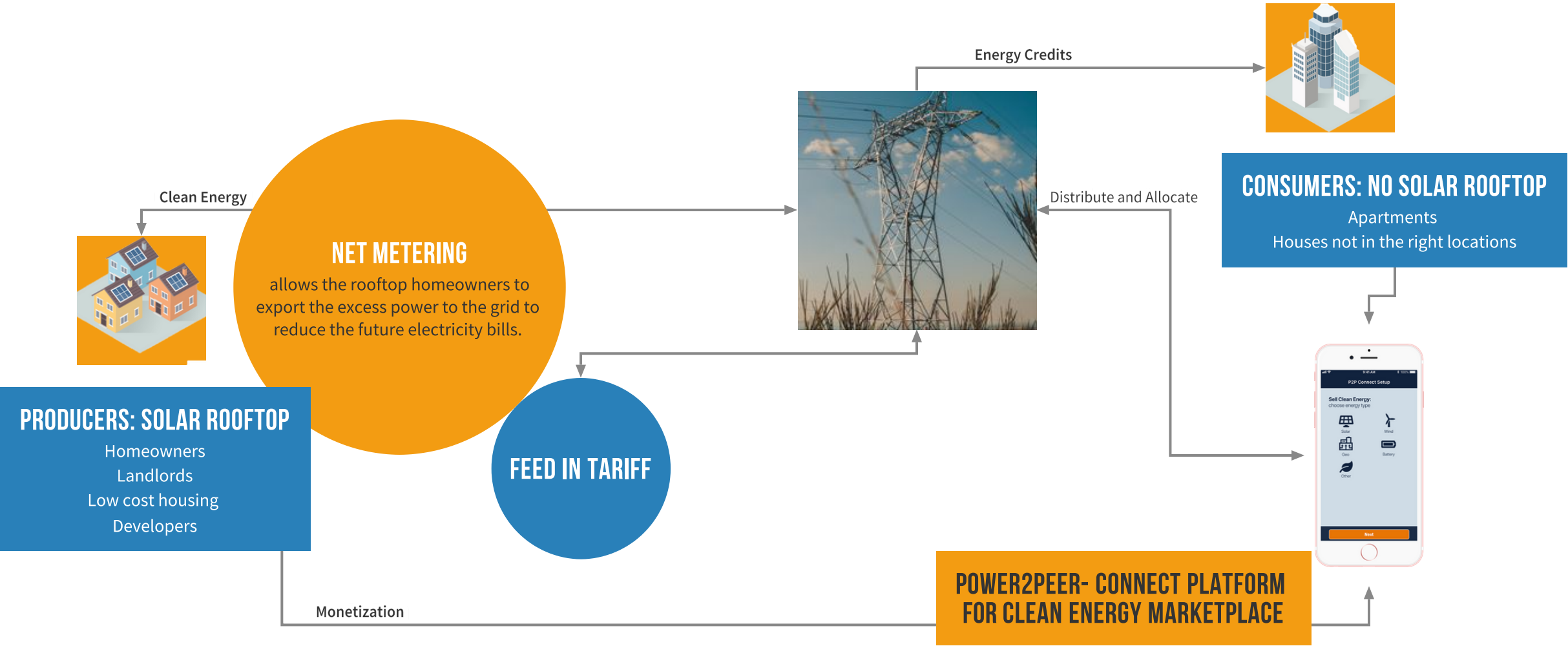
= \$1 Billion/Year in the growing market of excess energy



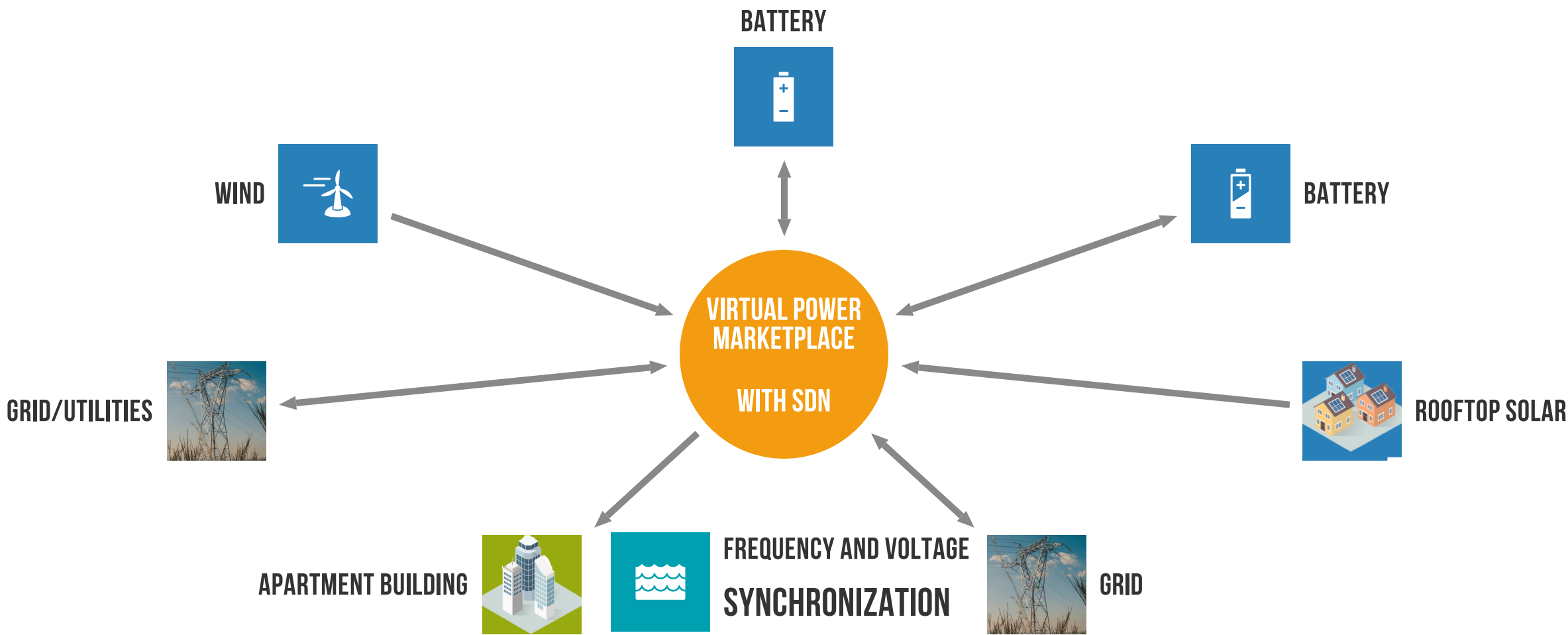
**CLIMATE
CHANGE
IMPACTS OUR
ENVIRONMENT**



NO MONETIZATION AND NO GRID SYNCHRONIZATION



VIRTUAL POWER MARKETPLACE WITH GRID SYNCHRONIZATION AND MONETIZATION



TECHNOLOGY



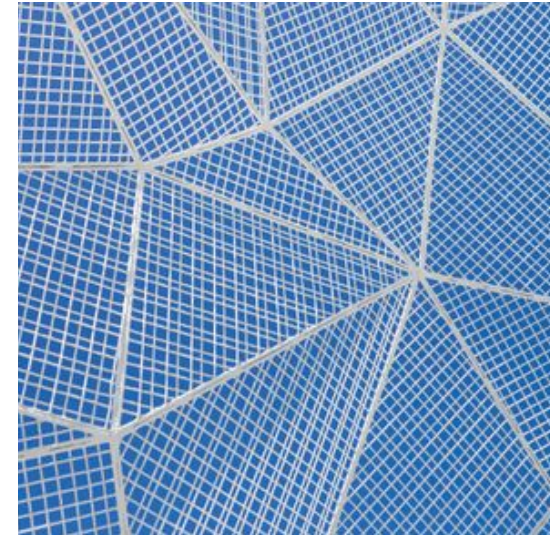
P2P CONNECT

BLOCKCHAIN

Inherently secure, un-hackable, transparent
Smart contract for authenticate transactions without
the need for third party validation

SDN CONTROLLER
FOR GRID STABILITY AND RELIABILITY
PATENT PENDING

MICROGRIDS



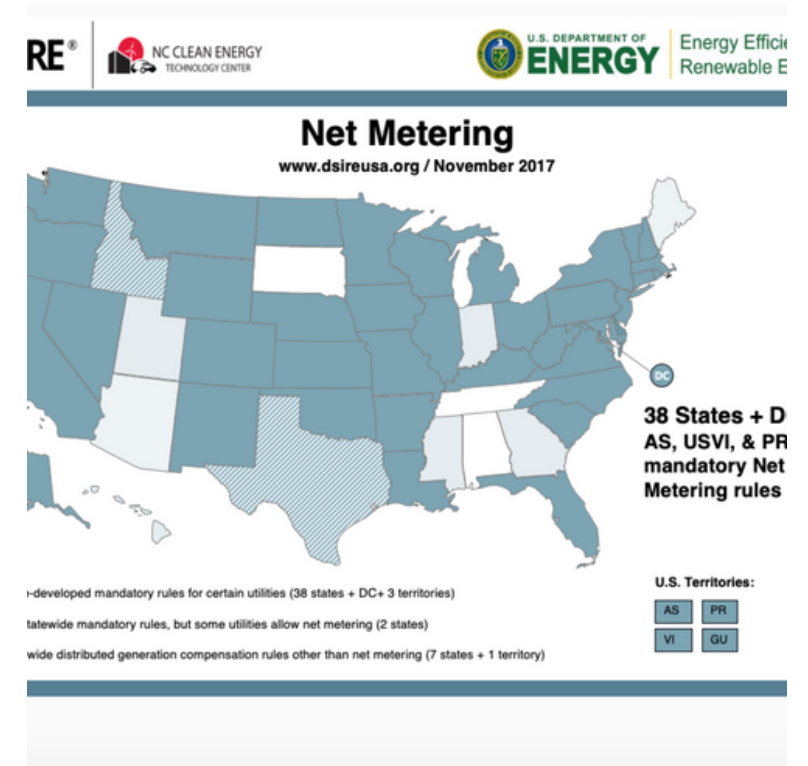
MARKET



IN USA 2.5 MILLION HOUSEHOLD
\$1 BILLION EXCESS ENERGY MARKET



IN NORTHEAST 500,000 HOUSES
225 MILLION EXCESS ENERGY MARKET



NET METERING IN 34 STATES AND
GROWING

NO MARKETPLACE FOR EXCESS ENERGY MONETIZATION OF ROOFTOP SOLAR PRODUCERS WITH SDN CONTROLLER



COMPETITION

Blockchain Marketplace		Power2peer
Blockchain Transactions	PowerLedger Exergy(LO3)	Grid+

GO TO MARKET



INSTALLERS

Rooftop Solar Owners
Landlords
B2B



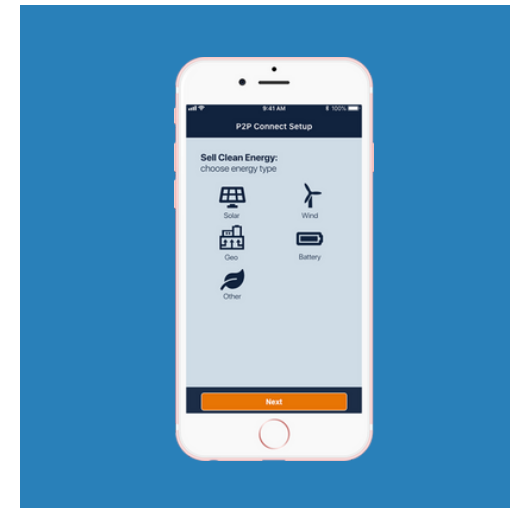
PROPERTY MANAGERS

Apartments
Clean Energy Adopters
B2C



GRID

Back Office Automation
B2B



P2P CONNECT APP

Connection for Producers and
Consumers

BUSINESS MODEL - PEER TO PEER TRANSACTION WITH DEMAND PEAK



ROOFTOP SOLAR PRODUCERS

Receive \$0.10/KWh



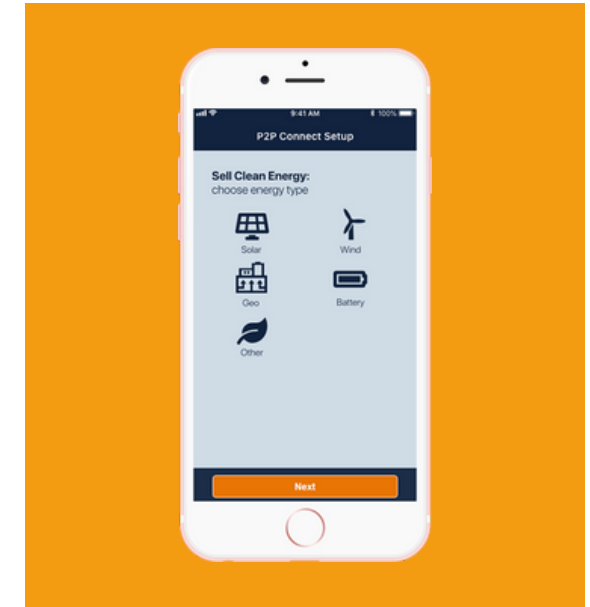
CONSUMERS WITH NO SOLAR ENERGY

Receive Clean Energy @20%
Discount
\$0.18/KWh



GRID

Grid Receives \$0.04/KWh
Grid purchase at \$0.30/KWh for
peak



POWER2PEER CONNECT APP

Power2Peer Receive \$0.04/KWh

TEAM



EXPERIENCED TEAM



MAMTA SONWALKAR

CEO/Co-Founder



RAJEEV AGRAWAL

CFO/Operation



DR NISH SONWALKAR

Innovator/ Co-founder / Tech Lead



TRIVANI SHAHI

Web/Communication

INDUSTRY EXPERT ADVISORS



AMITESH SINGH

Advisor/Black & Decker



ALISTAIR PIM

Advisor/NECEC



JOHN PIRET

Advisor MIT Energy Lab



RICK LEWANDOWSKI

Advisor/Solar

SUSTAINABILITY



**ACCELERATE CLEAN
ENERGY ADOPTION AND
JOBS**

Economics



**RESILIENT CLEAN ENERGY
COMMUNITIES**

Social



**SIGNIFICANT REDUCTION
OF CARBON DIOXIDE (2.9
GT/YEAR)**

Environmental



**INCREASE GRID
EFFICIENCY WITH DER
INTEGRATION**

Efficiency



THANK YOU

Mamta Sonwalkar / CEO/Co-founder



mamta@power2peer.com



www.power2peer.com